



## Electric drilling units

### STX3 series

Compact, economical and rigid units suitable for boring process.

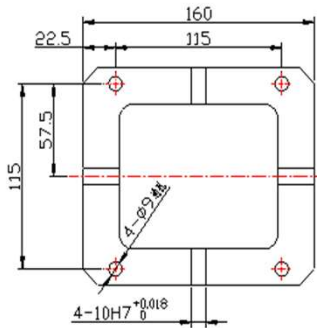
Models	Spindle Rotation Speed 50 Hz min <sup>-1</sup>	Motor Specifications			
		2.2 kW 6P	1.5 kW 2P	1.1 kW 2P	0.75 kW 2P
		Motor Torque [N.m]	Motor Torque [N.m]	Motor Torque [N.m]	Motor Torque [N.m]
STX3-2-22120H	12,000	1.78	1.22	0.89	0.61
STX3-2-22100H	10,000	2.14	1.46	1.07	0.73
STX3-2-2280H	8,000	2.68	1.82	1.34	0.91
STX3-2-2260H	6,000	3.57	2.43	1.78	1.22
STX3-2-2240H	4,000	5.36	3.65	2.68	1.82
STX3-2-2230H	3,000	7.14	4.87	3.57	2.43
STX3-2-2222H	2,200	9.74	6.64	4.87	3.32
STX3-2-2215H	1,500	14.28	9.74	7.14	4.87

Models	Spindle Rotation Speed 50 Hz min <sup>-1</sup>	Motor Specifications		
		1.1 kW 6P	0.75 kW 6P	0.55 kW 6P
		Motor Torque [N.m]	Motor Torque [N.m]	Motor Torque [N.m]
STX3-6-1120H	2,000	5.36	3.65	2.68
STX3-6-1113H	1,300	8.24	5.62	4.12
STX3-6-1110H	1,000	10.71	7.31	5.36
STX3-6-1107H	700	15.31	10.44	7.65
STX3-6-1105H	500	21.43	14.61	10.71

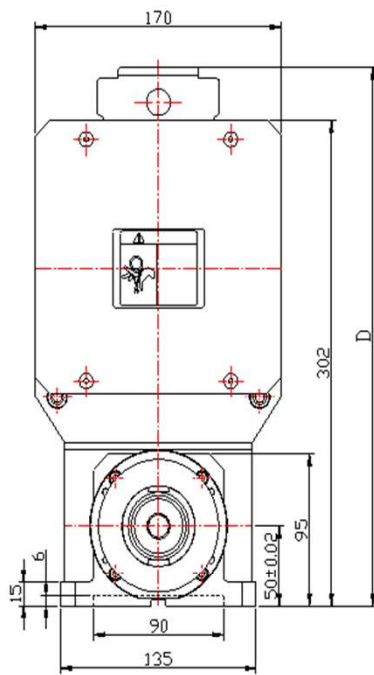
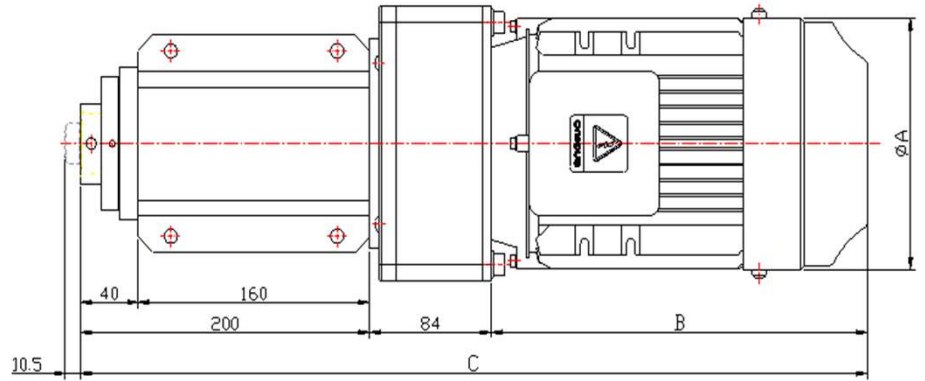
#### Notes:

1. Model selection should be done from the above chart, based on workpiece specifications, diameter of hole and cutting speed.
2. Motor output is 2.2kW, 2 Poles or 1.1kW, 6 Poles. Optional motor is available to reduce energy consumption.
3. "H" stands for HSK spindle. "B" or "C" is applied at the end of the model when BT30 or ER25 is required.
4. "22" and "11" represent 2.2kW and 1.1kW. This can be substituted by other motor output. For example 07 represents 0.75kW.
5. "2" and "6" represent 2 poles and 6 poles. Please distinguish models with same motor power.
6. When ordering, please indicate the required motor voltage and frequency.
7. The dimensional drawing below is for the standard HSK50 spindle.
8. When variable speed rotation (12000 – 15000 rpm) motor is selected, "P" is added at the end of a model.

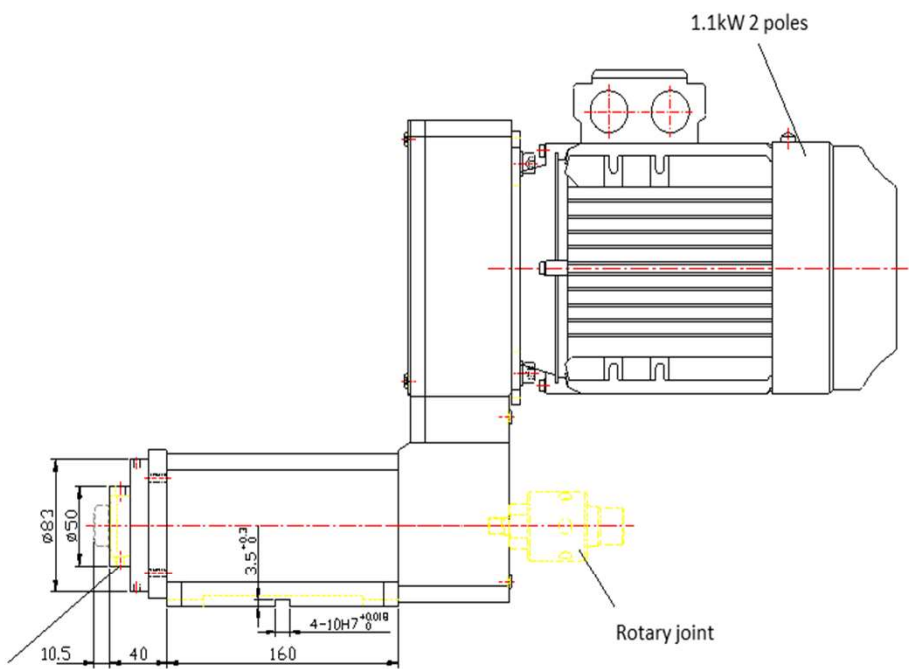
## Dimensions



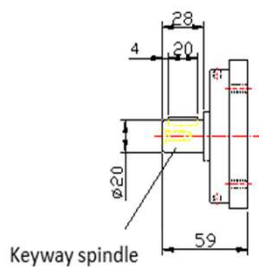
Viewed from bottom



HSK50 mounting spindle

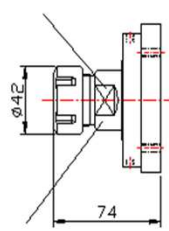


Rotary joint

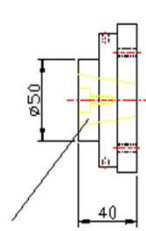


Keyway spindle

Width across flat 32



ER25 mounting spindle



BT30 mounting spindle

Motor (kW)		Plate Number	$\phi A$	B	C	D
2P	6P					
0.75	0.55	80	156	260	544	335
1.1						
1.5	0.75	90S	169	260	544	342
2.2	1.1	90L	169	280	564	342