

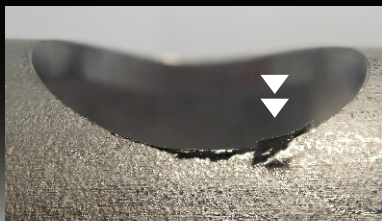
Achieve
easy deburring
with BARRIQUAN.



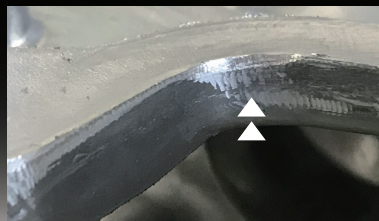
DEBURRING TOOL HOLDER BARRIQUAN BRQ-TX01

FOR
MACHINING CENTER

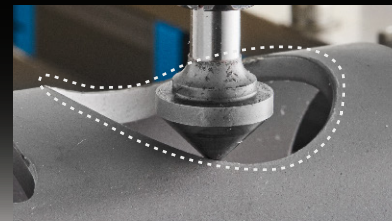
Floating function of Barriquan solves
all problems in deburring automation!!



Remaining Burr



Cutting Too Deep



Complicated Workpiece Shape

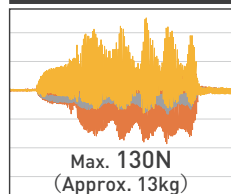
What is **Float Deburring** which enables automated deburring?



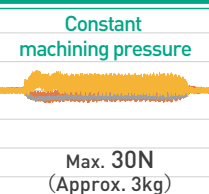
It is a machining method that prevents burrs from being left behind and workpieces from being over-shaved by aligning the tool to the shape of the workpiece at a constant pressure.

Machining Load
Comparison

Without Float Deburring

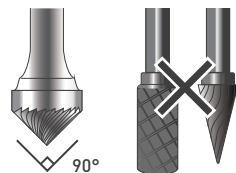


With Float Deburring



Suitable tools
for
Float Deburring

Cutters

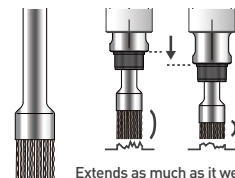


• 90° tip angle is recommended



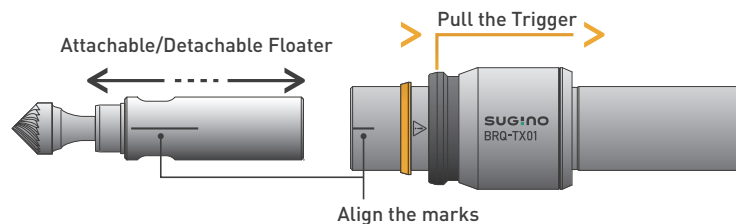
• More blades are better

Brushes

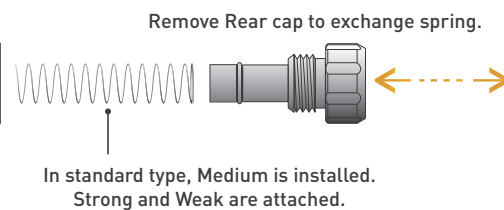


• Brush should have cutting power at the tip of the bristles

1. Detachable Floater



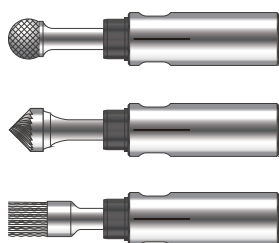
2. Exchangeable Spring



1. Change Floater in 3 seconds!

You can pull trigger and change floater in 3 seconds.
No need to waste your time for tool change.

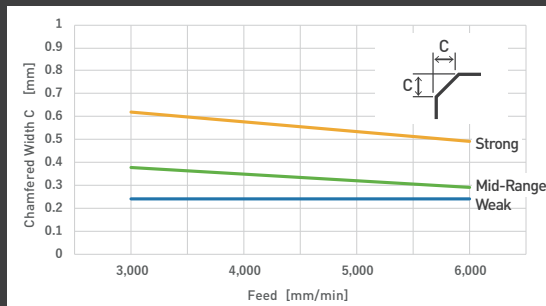
No tool is required for daily maintenance.
Daily maintenance will extend lifetime of Barriquan.



2. Spring change manually (no tool required)

You can detach rear cap manually (no tool is required).
Please choose best spring to adjust cutting amount.

Relationship between Feed Speed and Chamfer width by Spring



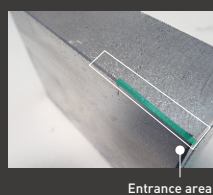
Machine = Sugino SC-V30a
Material = Steel
Rotation Speed = 8,000min⁻¹

Specifications

Model	BRQ-TX01
Series	BARRIQUAN
Shank size	φ20 X 40.5L
Length without shank	72mm
Body diameter	φ29
Weight	270g
Allowable rotation speed	12,000min ⁻¹
Collet	φ6 (standard)
	φ3 (option)
	φ6.35 = 1/4 inch (option)
	φ3.175 = 1/8 inch (option)
Spring	Medium (installed inside body when you receive)
	Weak (attached with BRQ-TX01)
	Strong (attached with BRQ-TX01)

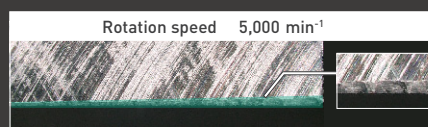
Corresponds to allowable rotation speed of 12,000min⁻¹
High feed rate shortens CT and provides stable finishing.

Example of deburring finish with different rotation speed.



Entrance area

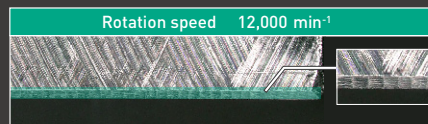
Feed = 6,000 mm/min
Material = Steel



Rotation speed 5,000 min⁻¹

Max. Chamfered Width 0.49mm
Min. Chamfered Width 0.24mm

Deburring width is not stable at entrance area.



Rotation speed 12,000 min⁻¹

Max. Chamfered Width 0.37mm
Min. Chamfered Width 0.37mm

With higher rotation speed, deburring width is stable even at entrance area.

SUGINO
SUPER! TECHNOLOGY

SUGINO MACHINE FRANCE S.A.S.

www.sugino.cz

TEL : +33-1-84-17-49-87

✉ contact@sugino.eu



More
Information

■ Specifications in this catalog are subject to change without prior notice for further improvement.

■ When exporting this product overseas, please follow the export control procedures based on Japan's Foreign Exchange and Foreign Trade Law.

■ SUGINO, SUGINO and BARRIQUAN are registered trademarks or service marks of Sugino Machine Limited in Japan or foreign countries.

■ The content of this catalog is as of April 2022.

■ Any unauthorized use, copying or reprinting of the contents or part thereof in this catalog is prohibited.

BRQ-TX01 En/2204 01 PR