

Mechanical feed tapping unit

SYNCHROTAPPER

SSTB

Rapid traverse and rapid return shorten cycle time.
 High flexibility in mounting orientation and small size and light weight enable space saving of dedicated machines.
 The STB type has been renewed by replacing induction motor with a PM motor.



Energy Saving

Global Support

Steel
M10

Aluminum
M12

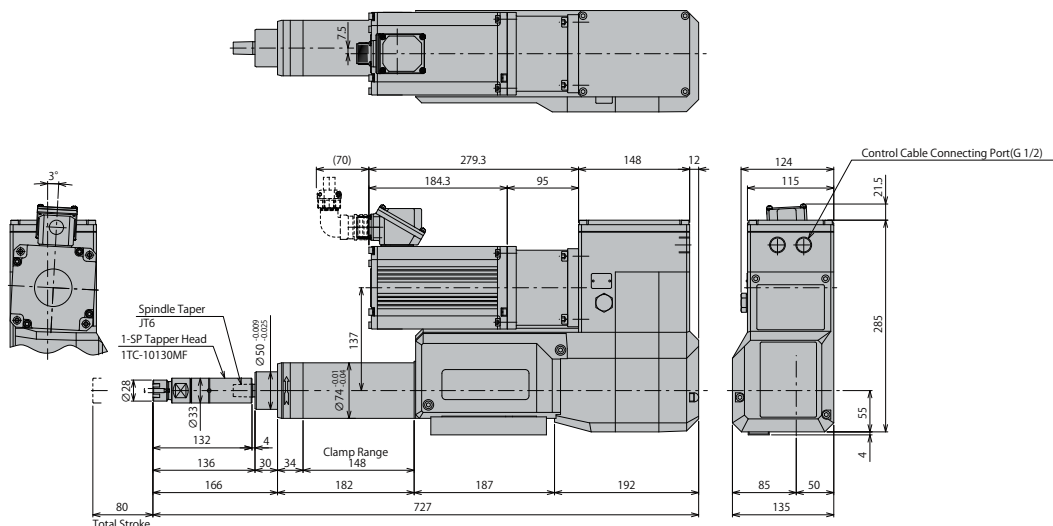
Specifications

Specifications Model number	No-load rotation speed 60Hz min ⁻¹	Spindle Torque N·m	Tapping Capacity								Stroke			Fast approach 60Hz mm/s	Maximum tapping cycletime per minute time/min	Motor Specifications			Thread Pitch		Weight kg
			1-SP		2-SP		3-SP		4-SP		Total stroke mm	Fast approach stroke mm	Pitch feed stroke mm			Rated Power kW	Rated Rotational Speed min ⁻¹	Rated Current A	mm	Threads/inch	
			Aluminum (ADC12)	Steel (S45C)	Aluminum (ADC12)	Steel (S45C)	Aluminum (ADC12)	Steel (S45C)	Aluminum (ADC12)	Steel (S45C)											
SSTB-H	2,150	1.99	M5	M4	M4	M2	M3	M2	-	12~80	10~75	0~40	105	30	0.75	3000 (100Hz)	3.3	100	28	27	
	1,500	2.89	M6	M4	M5	M4	M4	M3	M4									M2	80		27
	930	4.63	M8	M5	M6	M4	M5	M3	M4									M3	72		26
	640	6.70	M8	M6	M6	M5	M6	M4	M5									M4	64		24
SSTB-L	1,100	3.85	M8	M5	M5	M4	M4	M3	M4	M2	12~80	10~75	0~40	105	30	0.75	3000 (100Hz)	3.3	56	20	27
	690	6.22	M8	M6	M6	M5	M5	M4	M5	M3									48	19	
	430	9.97	M10	M8	M8	M6	M6	M5	M5	M4									44	18	
	270	16.10	M12	M10	M10	M8	M8	M6	M6	M5									40	16	

Notes:

- Regarding the two-step description of tapping capacity per number of axis, a spiral tap or a point tap is used for the upper column of the tapping capacity chart and hand tap No.2 is used for the lower column. In addition, Tapping Depth is a value of 1.5 times the screw diameter.
- The allowance weight for the installable multi-spindle attachments is as follows:
 Waterproof and dust-proof measures for the Synchro Tapper main body are required for upward processing. For more information, please contact your nearest sales office.
 (Sideways processing: 15 kg, Upward processing: 10 kg, Downward processing: 8 kg)

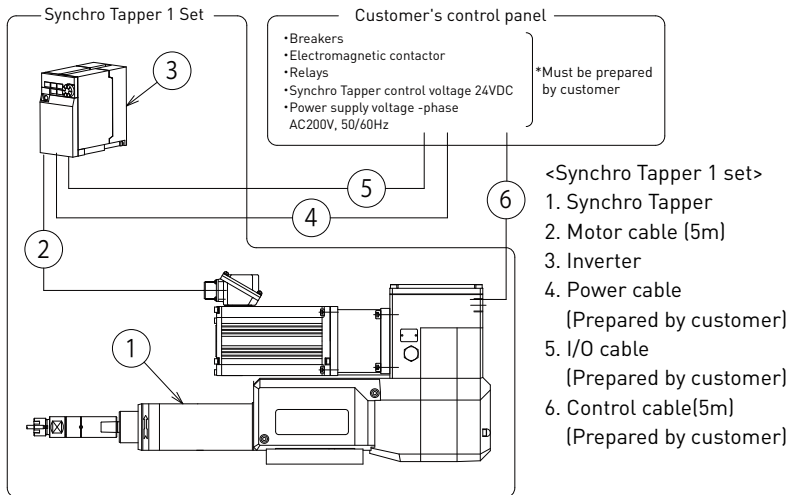
Dimensions (mm)



Notes:

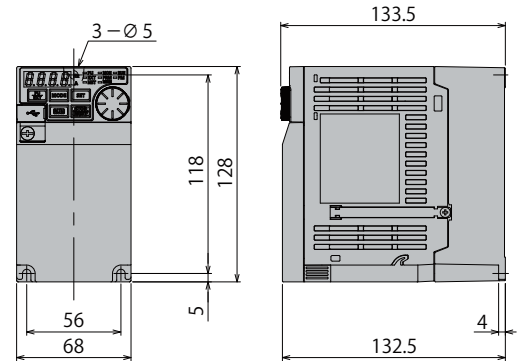
- For small diameter / high speed tapping (1,200 min⁻¹ or more), use a centering type 1-spindle tapper head (ITC-10130MC).
- For large diameter / low speed tapping (less than 1,200 min⁻¹), use the floating type 1-spindle tapper head (ITC-10130MF).
- Tap insertion depth *A may change dimension per tap size.

Configuration diagram



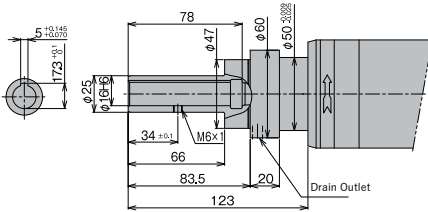
Inverter

FR-E820-0.75K

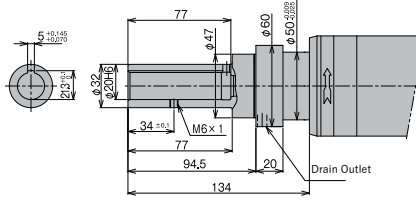


Tip shape

■ Adjustable spindle nose (optional)
Model: Bilz 16



■ Adjustable spindle nose (optional)
Model: Bilz 20



Notes:
1. Detailed dimensions of spindle nose are as recommended by NT Tool Co.
2. Bilz type spindle nose is applicable to adjustable adapters manufactured by NT Tool Co.
3. When installing the Synchro Tapper horizontally, the drain outlet must face downward.

I/O Signal Specifications

I/O	Signal	Name
Input	STF	Normal rotation (forward)
	STR	Reversal (reverse)
	RH	Unused
	RM	Unused
	RL	Unused
	MRS	Output stop
Output	RES	Reset
	A	Abnormal Output(Relay) Normally-open contact
	B	Abnormal Output(Relay) Normally-closed contact
	RUN	In operation
	FU	Freq detection

Option

■ Multi-spindle head

Various multi-spindle heads are available.
For details, please refer to our web page.



■ Tapper Head

Various tapper heads are available.
For details, please refer to our web page.



■ Controller

A controller dedicated to Synchro Tapper is available.
Please contact our nearest sales office for details.



For more information about our products, please visit our website. ▶▶



SUGINO
SUPER! TECHNOLOGY

SUGINO MACHINE LIMITED
www.sugino.com

Olinas Tower Bldg., 8th floor, 4-1-3 Taihei, Sumida-ku,
Tokyo, 130-0012 JAPAN
TEL +81-3-5619-5760 FAX +81-3-5619-5765
✉ export@sugino.com

- Specifications in this catalog are subject to change without prior notice for further improvement.
- When exporting this product overseas, please follow the export control procedures based on Japan's Foreign Exchange and Foreign Trade Law.
- **SUGINO**, **SUGINO**, and **SYNCHROTAPPER** are trademarks or service marks of Sugino Machine Limited in Japan or foreign countries.
- The content of this catalog is as of January 2024.
- Any unauthorized use, copying or reprinting of the contents or part thereof in this catalog is prohibited.