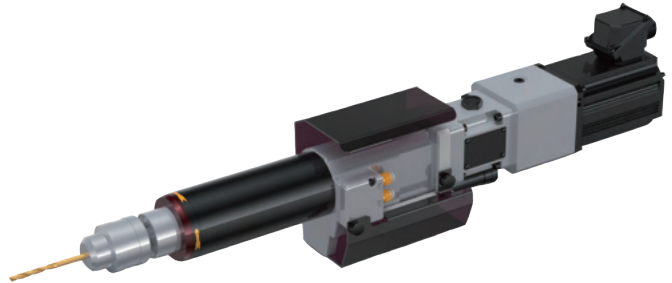


Compact, light-weight pneumatically-operated drilling units

SELFEEDER ELECTRIC

SSE3C

Slim cylindrical type with concentric rotary drive shaft and spindle. Ideal for space-saving parallel arrangement. The ES3C type has been renewed by replacing induction motor with a PM motor.



Energy Saving

Global Support

Variable Spindle Rotation

Steel
 $\phi 8$

Aluminum
 $\phi 10$

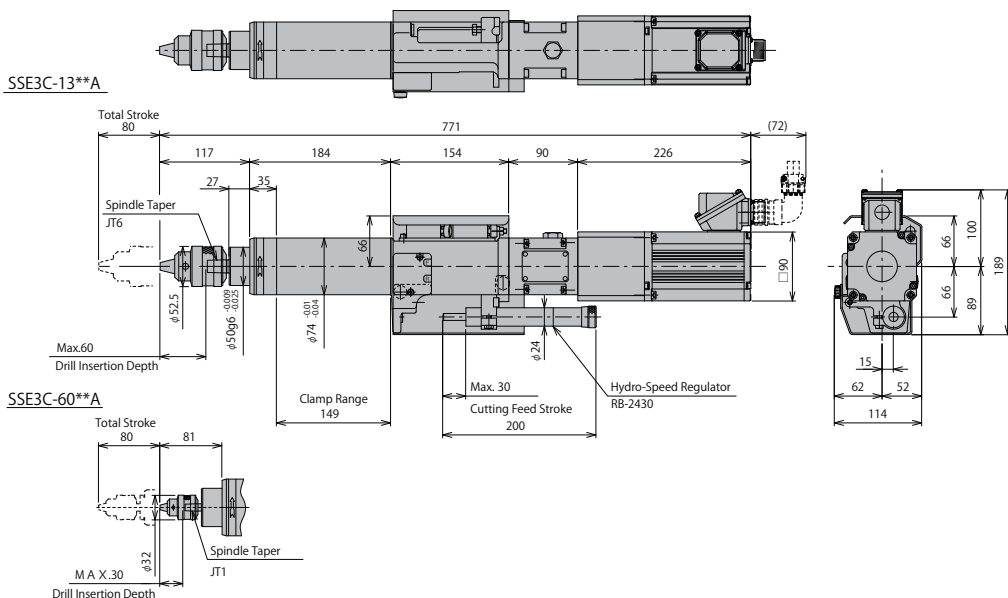
Specifications

Supply air pressure at 0.5 MPa

Specifications Model number	No-load rotation speed 50~120 Hz min ⁻¹	Spindle Torque N·m	Chucking capacity mm	Drilling Capacity												Stroke		Motor Specifications			Thrust N	Air Consumption L/Stroke	Weight kg
				1-SP			2-SP			3-SP			4-SP			Total stroke mm	Cutting feed stroke mm	Rated Power kW	Rated Rotational Speed min ⁻¹	Rated Current A			
				Aluminum (ADC12)	Cast iron (FC200)	Steel (S45C)	Aluminum (ADC12)	Cast iron (FC200)	Steel (S45C)	Aluminum (ADC12)	Cast iron (FC200)	Steel (S45C)	Aluminum (ADC12)	Cast iron (FC200)	Steel (S45C)								
SSE3C-6036A	1,500~3,600	1,500~3,000min ⁻¹ [Rated Torque] : 0.64 Over 3,000~3,600min ⁻¹ [Rated Power]	6.5	5	2.5	2	4	2.5	2	3	2	2	-	-	-	80	0-30	0.2	3000 (100Hz)	1.1	980	3~4	16
SSE3C-6026A	1,100~2,640	1,100~2,200min ⁻¹ [Rated Torque] : 0.87 Over 2,200~2,640min ⁻¹ [Rated Power]		6	3.5	3	4.5	3.5	3	3.5	2.5	2	-	-	-								
SSE3C-1317A	700~1,680	700~1,400min ⁻¹ [Rated Torque] : 1.37 Over 1,400~1,680min ⁻¹ [Rated Power]	13	7	5.5	5	5	4	3.5	4	3.5	3	3	2.5	2								
SSE3C-1311A	460~1,100	460~920min ⁻¹ [Rated Torque] : 2.09 Over 920~1,100min ⁻¹ [Rated Power]		8	7	6	6	5	4	4.5	4	3.5	4	3.5	3								
SSE3C-1306A	275~660	275~550min ⁻¹ [Rated Torque] : 3.50 Over 550~660min ⁻¹ [Rated Power]		10	8.5	8	8	6	5	6	5	4	5	4	3.5								

- Notes:
- The selection of models should be based on the shape of the work, material, cutting characteristics, diameter and material of tools, rotational speed [cutting speed], etc.
 - The drilling capacity displayed in the above table is based on values representing a drilling depth of twice the diameter of the drill.
 - The standard attachment for the Hydro Speed Regulator is RB-2430. Please specify an optional Hydro Speed Regulator if required. [Optional Hydro Speed Regulator Models: RB-2460, R-2442A, R-2462A, R-2482A]
 - Make sure to use a collet chuck or spindle nose when the hardness of carbide drills and tool shanks is higher than that of general HSS [high-speed steel] drills.
 - Valveless specification is standard. If you require valve block specification [former standard specification], please order valve block ass'y separately. (Replacement to be made by customer)

Dimensions (mm)



About Pneumatic Control Circuit

Please refer to the following QR code for the pneumatic control circuit to control the forward/reverse movement and speed of the Selffeeder.

Notes

- Supply clean air of 0.5 to 0.6 MPa to the Selffeeder.
- Air equipment up to the air supply port should be prepared by the customer.
- Use a meter-in flow control valve.
- When using the unit at an angle downward or vertical downward, install a pneumatic control circuit specialized to prevent the ram from falling.

For more info

