

Compact, light-weight pneumatically-operated drilling units

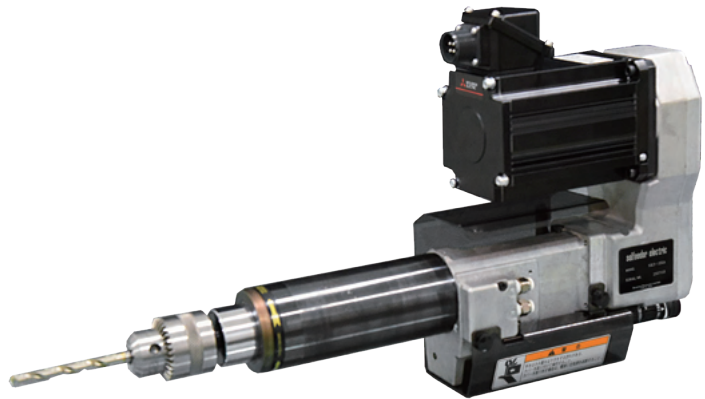
SELFEEDER ELECTRIC

SSE3

Standard type of SSE series.

Ideal for drilling in the high-speed rotation range.

The ES3P type has been renewed by replacing induction motor with a PM motor.



**Energy Saving**

**Global Support**

**Variable Spindle Rotation**

Steel  
 $\phi 9$

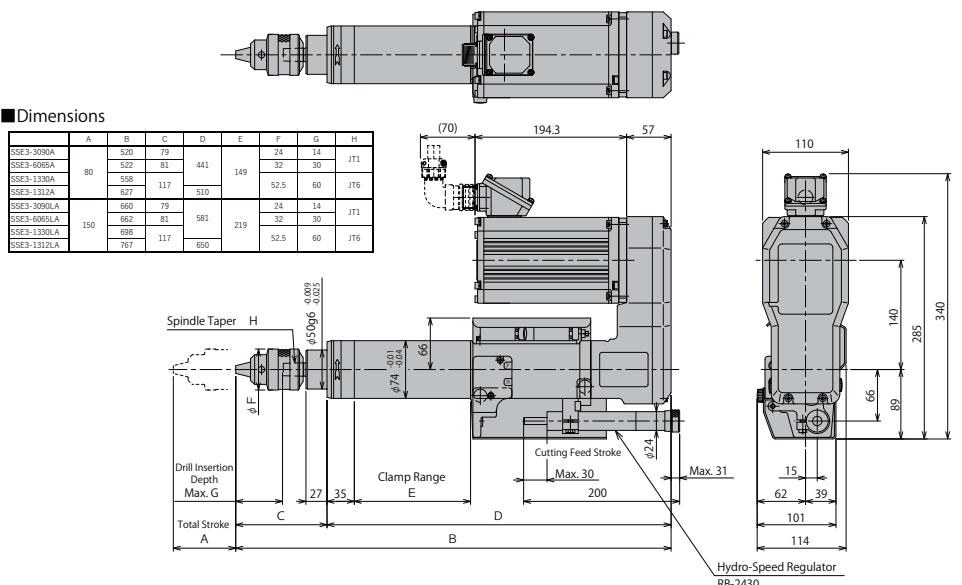
Aluminum  
 $\phi 13$

Specifications

Specifications	No-load rotation speed 50~120 Hz	Spindle Torque	Chucking capacity	Drilling Capacity												Stroke		Motor Specifications				Thrust	Air Consumption	Weight
				1-SP			2-SP			3-SP			4-SP			Total stroke	Cutting feed stroke	Rated Power	Rated Rotational Speed	Rated Current				
				Aluminum (ADC12)	Cast iron (FC200)	Steel (S45C)	Aluminum (ADC12)	Cast iron (FC200)	Steel (S45C)	Aluminum (ADC12)	Cast iron (FC200)	Steel (S45C)	Aluminum (ADC12)	Cast iron (FC200)	Steel (S45C)									
Model number	min <sup>-1</sup>	N·m	mm													mm	mm	kW	min <sup>-1</sup>	A	N	L/Stroke	kg	
SSE3-3090A	3,750~9,000	3,750~7,500min <sup>-1</sup> (Rated Torque) : 0.96 Over 7,500~9,000min <sup>-1</sup> (Rated Power)	3 Keyless Chuck	Aluminum (ADC12)	Cast iron (FC200)	Steel (S45C)	Aluminum (ADC12)	Cast iron (FC200)	Steel (S45C)	Aluminum (ADC12)	Cast iron (FC200)	Steel (S45C)	Aluminum (ADC12)	Cast iron (FC200)	Steel (S45C)	80	0-30	0.75	3000 (100Hz)	3.3	980	3~6	20	
SSE3-3090LA				4	1.5	1.5	-	-	-	-	-	-	-	-	-	-							150	23
SSE3-6065A	2,700~6,480	2,700~5,400min <sup>-1</sup> (Rated Torque) : 1.33 Over 5,400~6,480min <sup>-1</sup> (Rated Power)	6.5	Aluminum (ADC12)	Cast iron (FC200)	Steel (S45C)	Aluminum (ADC12)	Cast iron (FC200)	Steel (S45C)	Aluminum (ADC12)	Cast iron (FC200)	Steel (S45C)	Aluminum (ADC12)	Cast iron (FC200)	Steel (S45C)	80							20	
SSE3-6065LA				6	3	3	4.5	3	3	4	3	3	-	-	-	150							23	
SSE3-1330A	1,250~3,000	1,250~2,500min <sup>-1</sup> (Rated Torque) : 2.87 Over 2,500~3,000min <sup>-1</sup> (Rated Power)	13	Aluminum (ADC12)	Cast iron (FC200)	Steel (S45C)	Aluminum (ADC12)	Cast iron (FC200)	Steel (S45C)	Aluminum (ADC12)	Cast iron (FC200)	Steel (S45C)	Aluminum (ADC12)	Cast iron (FC200)	Steel (S45C)	80							20	
SSE3-1330LA				9.5	6	5.5	7	5.5	5	6	5	3.5	5	4	2.5	150							23	
SSE3-1312A (with gearbox)	500~1,200	500~1,000min <sup>-1</sup> (Rated Torque) : 7.14 Over 1,000~1,200min <sup>-1</sup> (Rated Power)	13	Aluminum (ADC12)	Cast iron (FC200)	Steel (S45C)	Aluminum (ADC12)	Cast iron (FC200)	Steel (S45C)	Aluminum (ADC12)	Cast iron (FC200)	Steel (S45C)	Aluminum (ADC12)	Cast iron (FC200)	Steel (S45C)	80	21							
SSE3-1312LA (with gearbox)				13	10	9	8.5	6.5	5.5	6.5	5	4	5	4	3.5	150	24							

- Notes:
- The selection of models should be based on the shape of the work, material, cutting characteristics, diameter and material of tools, rotational speed [cutting speed], etc.
  - The drilling capacity displayed in the above table is based on values representing a drilling depth of twice the diameter of the drill.
  - The standard attachment for the Hydro Speed Regulator is RB-2430. Please specify an optional Hydro Speed Regulator if required. [Optional Hydro Speed Regulator Models: RB-2460, R-2442A, R-2462A, R-2482A]
  - Make sure to use a collet chuck or spindle nose when the hardness of carbide drills and tool shanks is higher than that of general HSS [high-speed steel] drills.
  - Valveless specification is standard. If you require valve block specification (former standard specification), please order valve block ass'y separately. [Replacement to be made by customer]

Dimensions (mm)



**About Pneumatic Control Circuit**

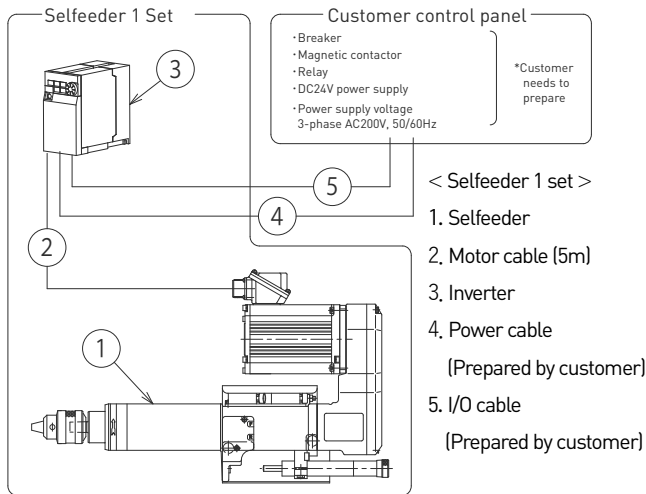
Please refer to the following QR code for the pneumatic control circuit to control the forward/reverse movement and speed of the Selffeeder.

Notes

- Supply clean air of 0.5 to 0.6 MPa to the Selffeeder.
- Air equipment up to the air supply port should be prepared by the customer.
- Use a meter-in flow control valve.
- When using the unit at an angle downward or vertical downward, install a pneumatic control circuit specialized to prevent the ram from falling.

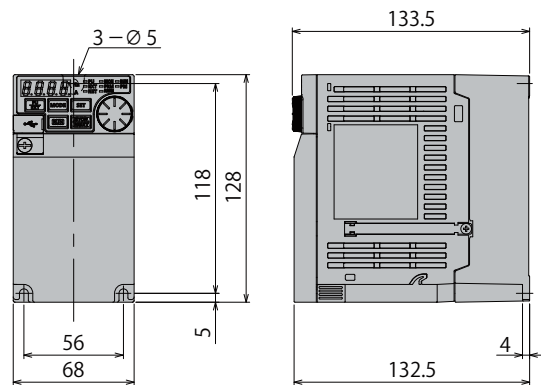
For more info

## Configuration diagram



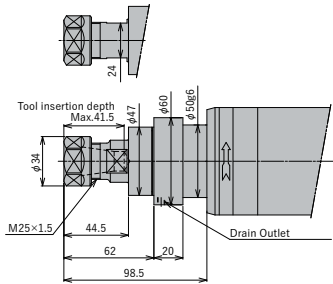
## Inverter

FR-E820-0.75K



## Tip shape

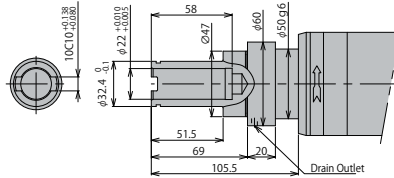
■ Collet chuck / spindle nose (option)  
Model No.: ER20 or equivalent  
(chucking range  $\phi 1$  to  $\phi 13$ )



Note:

1. Detailed dimensions of spindle tip are as recommended for REGO-FIX ER collets.
2. Collet, collet nut, and wrench are not included. Please order separately.
3. When installing the Selfeeder <Electric> horizontally, the drain outlet must face downwards.

■ Adjustable Spindle Nose (option)  
Model No.: KH-22E



Note:

1. Detailed dimensions of spindle nose are as recommended by NT Tool Co.
2. KH-E type spindle nose is applicable to NT Tool's quick-change stub holders KH-A / KH-E type.
3. Adjustable spindle nose is not applicable for Selfeeder <Electric> with no-load rotation speed exceeding 5,000min<sup>-1</sup>.
4. When installing the Selfeeder <Electric> horizontally, the drain outlet must face downwards.

## I/O Signal Specifications

I/O	Signal	Name
Input	STF	Unused
	STR	Spindle ON
	RH	Multi-step spd (1 to 15 spd) Freq set range 50 to 120Hz Can be set in 5Hz increments
	RM	
	RL	
	MRS (REX)	
RES	Reset	
Output	A	Abnormal Output(Relay) Normally-open contact
	B	Abnormal Output(Relay) Normally-closed contact
	RUN	In operation
	FU	Freq detection

## Option

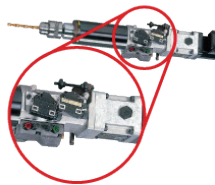
### ■ Hydro-speed regulator

A hydraulic feed speed control unit that can adjust the feed rate of an air cylinder to any desired speed. For details, please refer to our web page.



### ■ Operate Signal Kit

This kit is designed to accurately detect the operation of a Selfeeder and control synchronized operation with other devices. For details, please refer to our web page.



### ■ Multi-spindle head

Various multi-spindle heads are available. For details, please refer to our web page.



For more information about our products, please visit our website. ▶▶



**SUGINO**  
SUPER! TECHNOLOGY

SUGINO MACHINE LIMITED  
www.sugino.com

Olinas Tower Bldg., 8th floor, 4-1-3 Taihei, Sumida-ku,  
Tokyo, 130-0012 JAPAN  
TEL +81-3-5619-5760 FAX +81-3-5619-5765  
✉ export@sugino.com

- Specifications in this catalog are subject to change without prior notice for further improvement.
- When exporting this product overseas, please follow the export control procedures based on Japan's Foreign Exchange and Foreign Trade Law.
- **SUGINO**, **SUGINO** and **SELFEEDER** are trademarks or service marks of Sugino Machine Limited in Japan or foreign countries.
- The content of this catalog is as of January 2024.
- Any unauthorized use, copying or reprinting of the contents or part thereof in this catalog is prohibited.